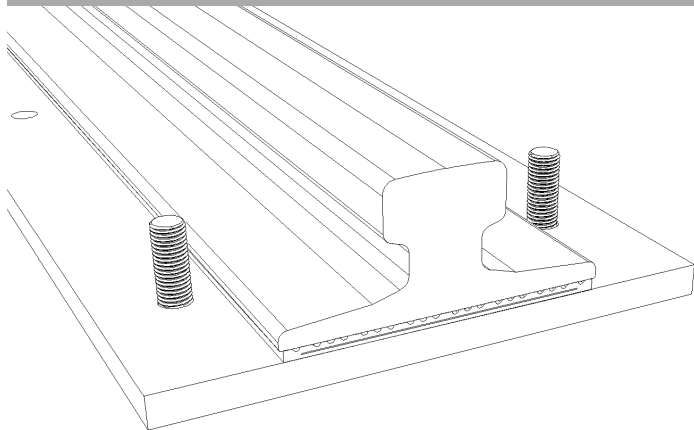


7 Series Clips

Fitting Instructions

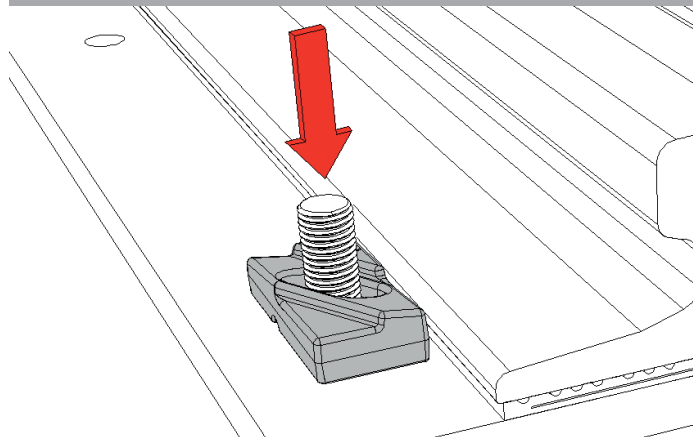
These instructions to be read in conjunction with product datasheet, available from www.gantrail.com.

FIGURE 1



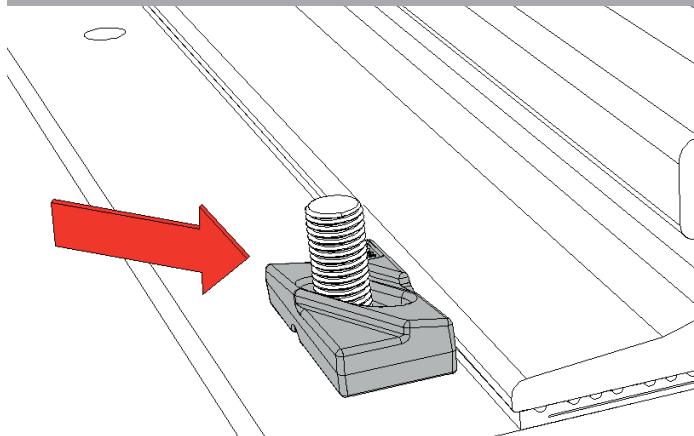
Insert bolt(s) through hole(s) in rail supporting structure.

FIGURE 2



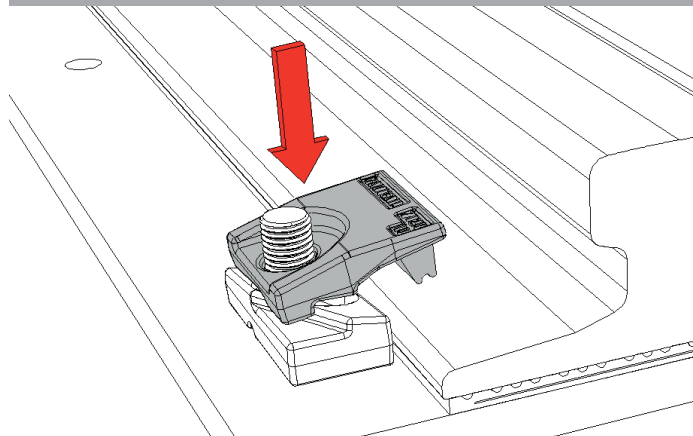
Place body of clip base over bolt.

FIGURE 3



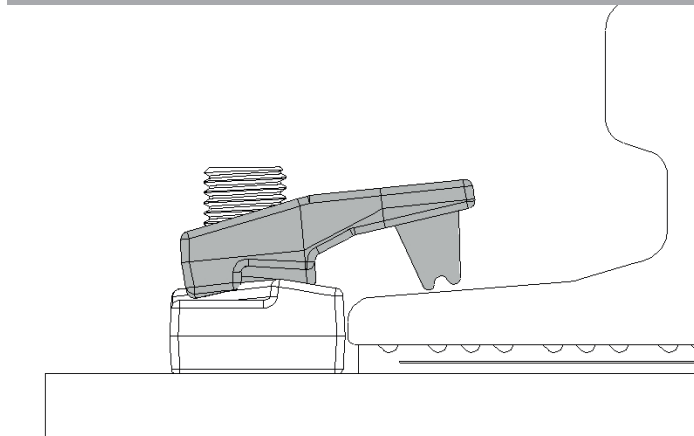
Move clip base into metal-to-metal contact with bottom edge of rail.

FIGURE 4



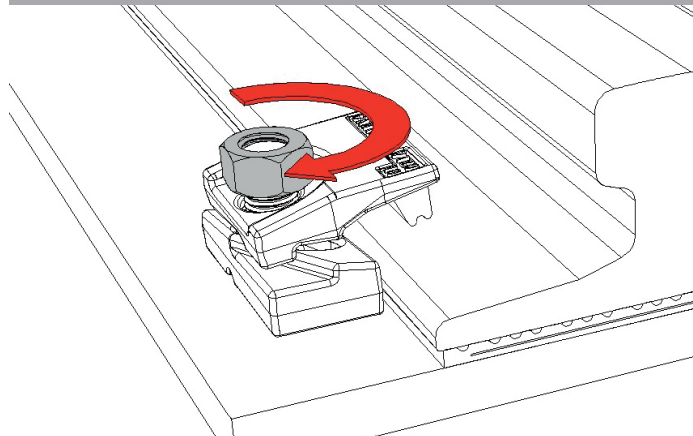
Place clip top over bolt with rubber 'nose' resting on upper surface of bottom flange of rail.

FIGURE 5



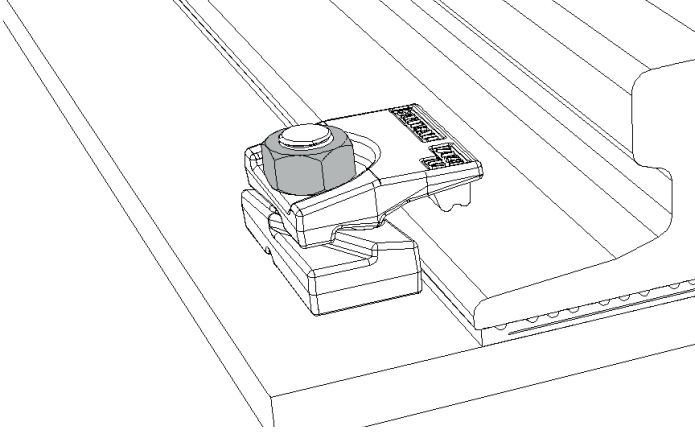
Bottom surface of clip top will not be in full metal-to-metal contact with clip base.

FIGURE 6



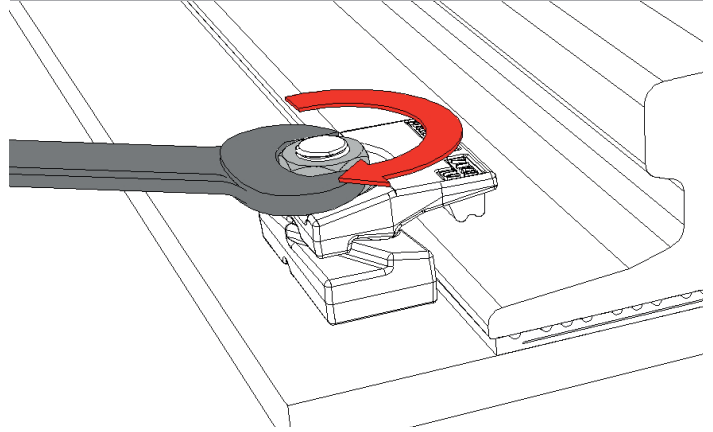
Run nut down bolt.

FIGURE 7



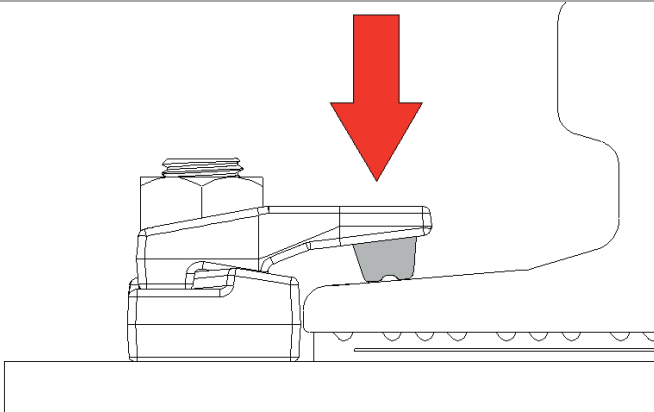
Nut to make contact with clip top.

FIGURE 8



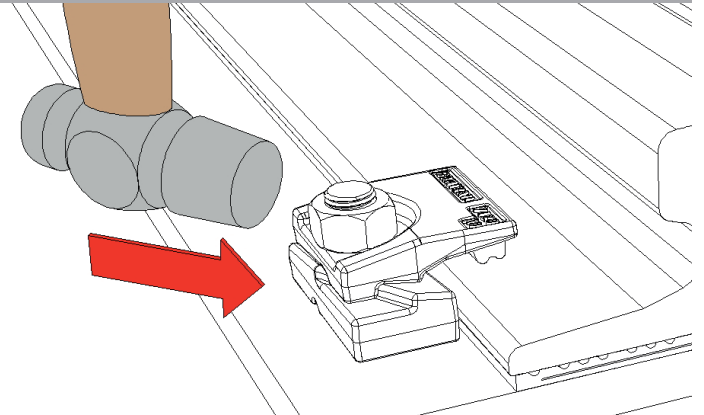
Tighten nut with spanner.

FIGURE 9



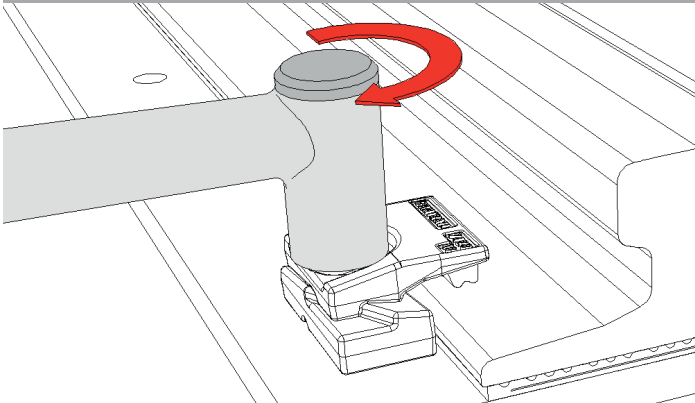
Tighten only until rubber 'nose' is compressed and bottom surface of clip top is in full metal-to-metal contact with clip base. Do not apply full torque yet.

FIGURE 10



With hammer of about 1 kilo, tap clip base towards rail along direction of slot in clip.

FIGURE 11



Tighten nut to required torque given on product datasheet.

A world of crane rail expertise.

www.gantrail.com



Gantry Railing Ltd
Sudmeadow Road
Hempsted
Gloucester GL2 5HG
ENGLAND

Tel: +44 (0) 1452 300688
E-mail: info@gantrail.com

