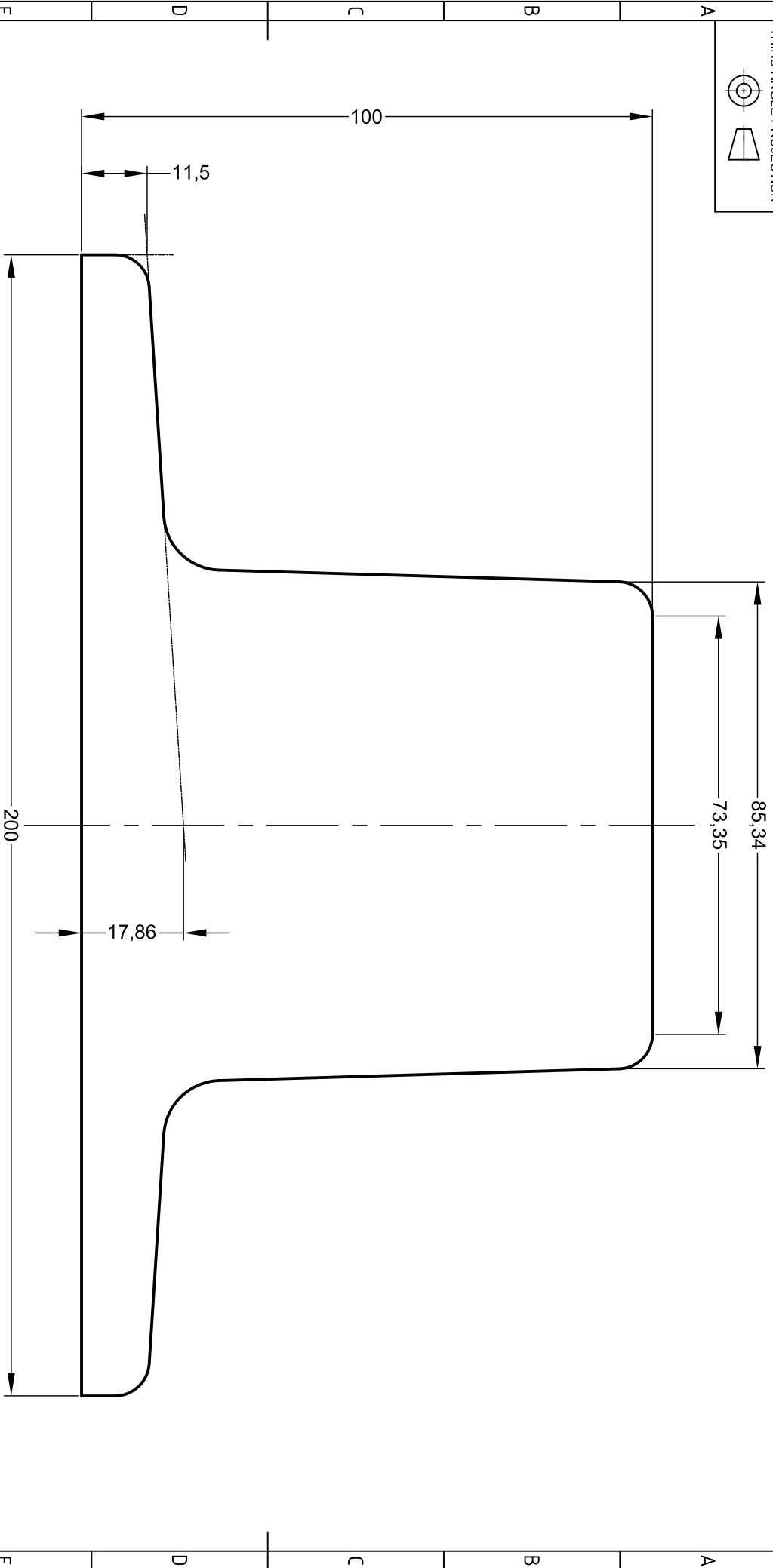


THIRD ANGLE PROJECTION



NOTE: THE PROPERTIES SPECIFIED BELOW HAVE BEEN CALCULATED USING AUTOCAD SOFTWARE AND ARE ACCURATE AT THE TIME OF THIS DRAWING ISSUE. THESE FIGURES MAY DIFFER SLIGHTLY FROM THOSE PUBLISHED IN THE STANDARD FOR THE RAIL.

GANTRAIL[®]
 Rail Mounting Systems

Gantry Railing Limited
 SUDMEADOW ROAD, HEMPSTED
 GLOUCESTER GL2 5HG, ENGLAND
 Tel: (01452)300888 Fax: (01452)300198
 International Dialling # 44.1452
<http://www.gantrail.com>
 E-Mail: info@gantrail.com

Rail Designation	JKL 85	
Rail Origin	CZECH REPUBLIC	Edition B
Standard	UNKNOWN	Date 06/07/10
Area of section	10252 mm ²	Scale 1 : 1 @ A4
Calculated Mass	kg/m	
Neutral Axis to base	43.3 mm	
Moment of Inertia	I _{xx} 959 cm ⁴ I _{yy} 1335 cm ⁴	

FOR GUIDANCE ONLY
 THIS INFORMATION HAS BEEN
 PROVIDED IN GOOD FAITH BUT
 SPECIFICATIONS DO CHANGE

THE TECHNICAL DATA CONTAINED IN THIS DRAWING IS THE PROPERTY OF GANTRY RAILING LIMITED AND IS SUBJECT TO COPYRIGHT ©