
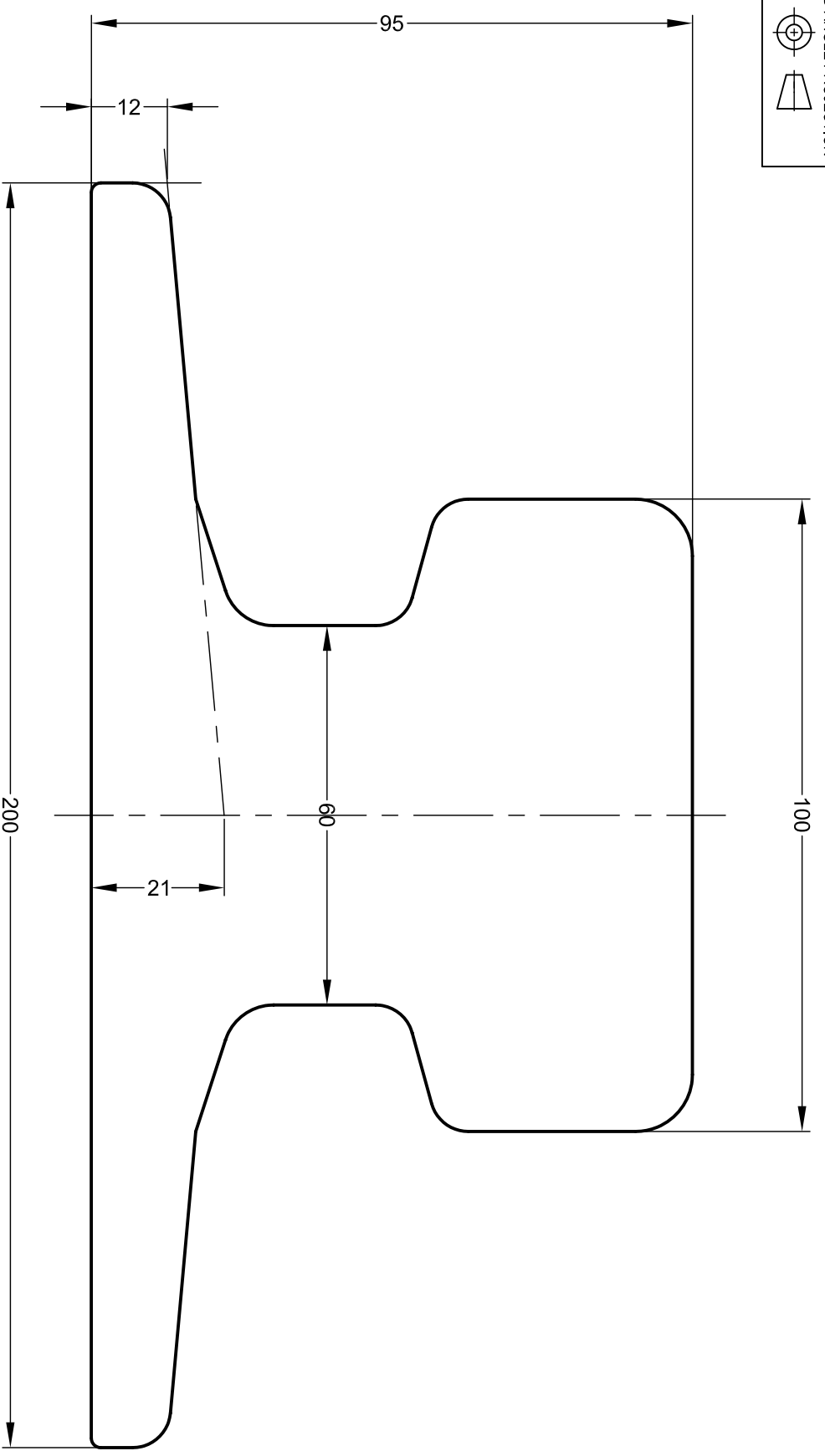


THIRD ANGLE PROJECTION

NOTE: THE PROPERTIES SPECIFIED BELOW HAVE BEEN CALCULATED USING AUTOCAD SOFTWARE AND ARE ACCURATE AT THE TIME OF THIS DRAWING ISSUE. THESE FIGURES MAY DIFFER SLIGHTLY FROM THOSE PUBLISHED IN THE STANDARD FOR THE RAIL.

**GANTRAIL**<sup>®</sup>

Rail Mounting Systems

THE TECHNICAL DATA CONTAINED IN THIS DRAWING IS THE PROPERTY OF GANTRY RAILING LIMITED AND IS SUBJECT TO COPYRIGHT ©

**Gantry Railing Limited**  
 SUDMEADOW ROAD, HEMPSTED  
 GLOUCESTER GL2 5HG, ENGLAND  
 Tel: (01452)300688 Fax (01452)300198  
 International Dialing # 44, 1452  
<http://www.gantrrail.com>  
 E-Mail: [info@gantrrail.com](mailto:info@gantrrail.com)

Rail Designation	SD100
Rail Origin	POLAND
Standard	PN62/H-93410
Area of section	9589 mm <sup>2</sup>
Calculated Mass	75.2 kg/m
Neutral Axis to base	42.9 mm
Moment of Inertia	I <sub>xx</sub> 891 cm <sup>4</sup>   I <sub>yy</sub> 1355 cm <sup>4</sup>

Edition A  
 Date 29/11/12  
 Scale 1:1@ A4

FOR GUIDANCE ONLY  
 THIS INFORMATION HAS BEEN PROVIDED IN GOOD FAITH BUT SPECIFICATIONS DO CHANGE