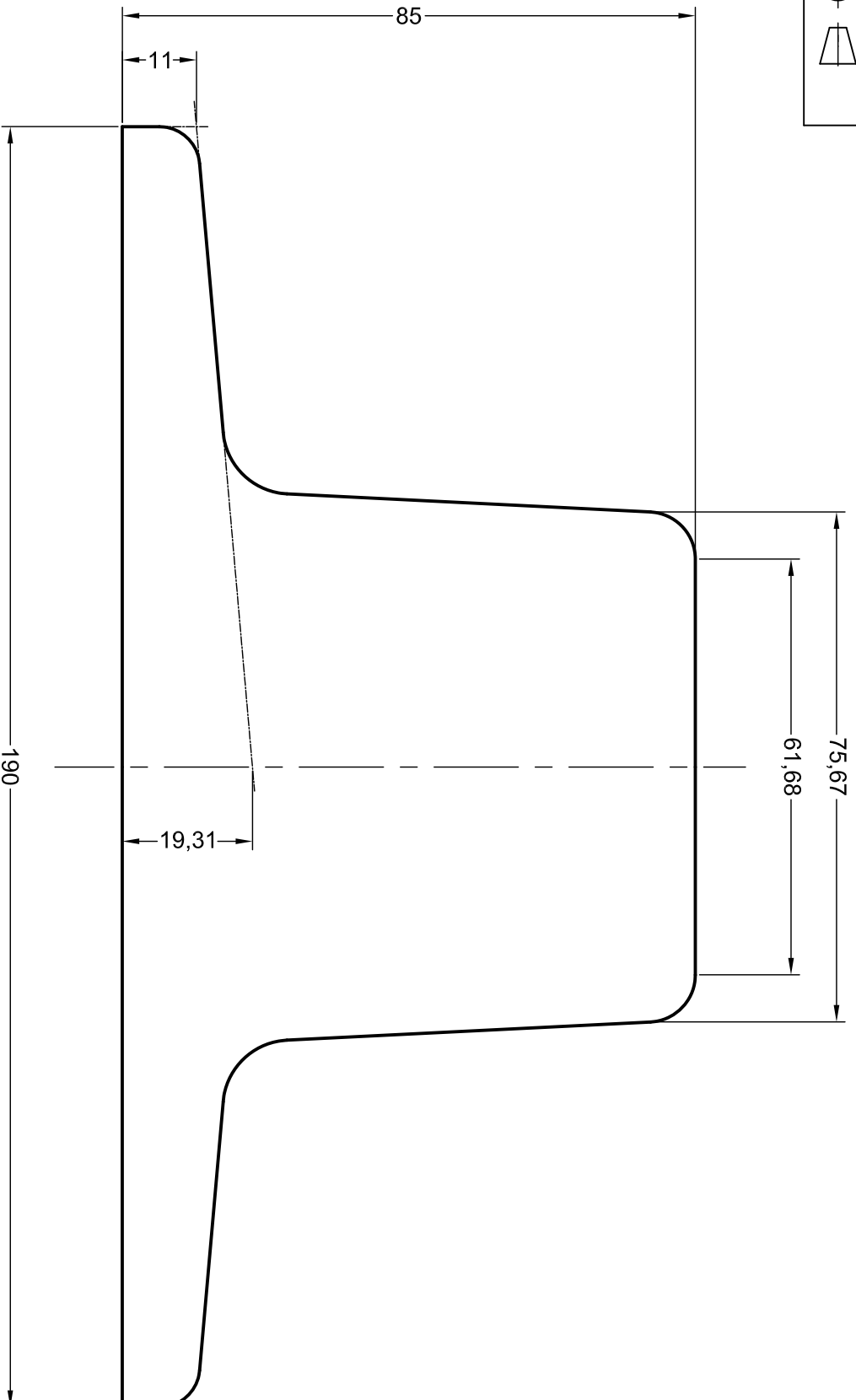


THIRD ANGLE PROJECTION



NOTE: THE PROPERTIES SPECIFIED BELOW HAVE BEEN CALCULATED USING AUTOCAD SOFTWARE AND ARE ACCURATE AT THE TIME OF THIS DRAWING ISSUE. THESE FIGURES MAY DIFFER SLIGHTLY FROM THOSE PUBLISHED IN THE STANDARD FOR THE RAIL.

GANTTRAIL[®]

Rail Mounting Systems

THE TECHNICAL DATA CONTAINED IN THIS DRAWING IS THE PROPERTY OF GANTTRY RAILING LIMITED AND IS SUBJECT TO COPYRIGHT ©

Gantry Railing Limited
 SUDMEADOW ROAD, HEMPSTED
 GLOUCESTER GL2 5HG, ENGLAND
 Tel: (01452)300688 Fax (01452)300198
 International Dialling # 44, 1452
<http://www.gantrrail.com>
 E-Mail: info@gantrrail.com

Rail Designation	ISCOR 64
Rail Origin	SOUTH AFRICA
Standard	UNKNOWN
Area of section	8167 mm ²
Calculated Mass	64.2 kg/m
Neutral Axis to base	35.5 mm
Moment of Inertia	I _{xx} 1015 cm ⁴ I _{yy} 547 cm ⁴

Edition B
 Date 06/07/10
 Scale 1 : 1 @ A4

FOR GUIDANCE ONLY
 THIS INFORMATION HAS BEEN PROVIDED IN GOOD FAITH BUT SPECIFICATIONS DO CHANGE